

## Overview

Village center designation recognizes and encourages local efforts to revitalize Vermont's traditional village centers. Village center revitalization is an ongoing process to improve a community's vitality and livability. Village center designation is a tool for revitalization and its focus is on supporting commercial activity in the center of Vermont's villages.

## By the Numbers

### Designated Village Centers

122 total designated village centers

### Village Center Tax Credits [2009-2015]

33 projects completed

28 communities served

\$1.5 million awarded credits

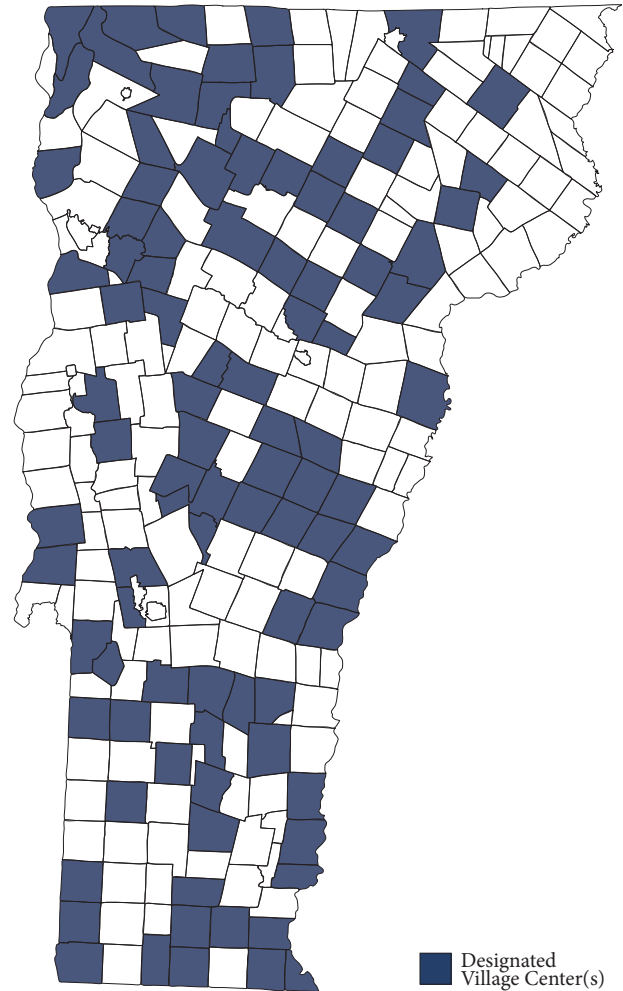
\$16 million in private investment

### Municipal Planning Grants [2009-2015]

118 grants awarded

64 communities served

\$1,183,165 awarded funds



For more information, please contact:

Richard Amore: [richard.amore@state.vt.us](mailto:richard.amore@state.vt.us) or 802.828.5229

or visit: [http://accd.vermont.gov/strong\\_communities/opportunities/revitalization/village\\_center](http://accd.vermont.gov/strong_communities/opportunities/revitalization/village_center)

## Village Center Designation Benefits

The Vermont village center designation program supports local revitalization efforts across the state by providing technical assistance and state funding to help designated municipalities build strong communities. Once designated, the community will be eligible for the following benefits:

### 10% Historic Tax Credits

- Available as an add-on to approved Federal Historic Tax Credit projects.
- Eligible costs include interior and exterior improvements, code compliance, plumbing and electrical upgrades.

### 25% Facade Improvement Tax Credits

- Eligible facade work up to \$25,000.

### 50% Code Improvement Tax Credits

- Available for up to \$50,000 each for elevators and sprinkler systems and \$12,000 for lifts.
- Eligible code work includes ADA modifications, electrical or plumbing up to \$25,000.

### 50% Technology Tax Credits

- Available for up to \$30,000 for installation or improvements made to data and network installations, and HVAC (heating, cooling or ventilation systems) reasonably related to data or network improvements.

### Priority Consideration for State Grants

- Priority consideration for Municipal Planning Grants, Vermont Agency of Transportation grants, Vermont Agency of Natural Resources grants and funding from Vermont's Community Development Program (CDBG).

### Priority Consideration by State Building And General Services (BGS)

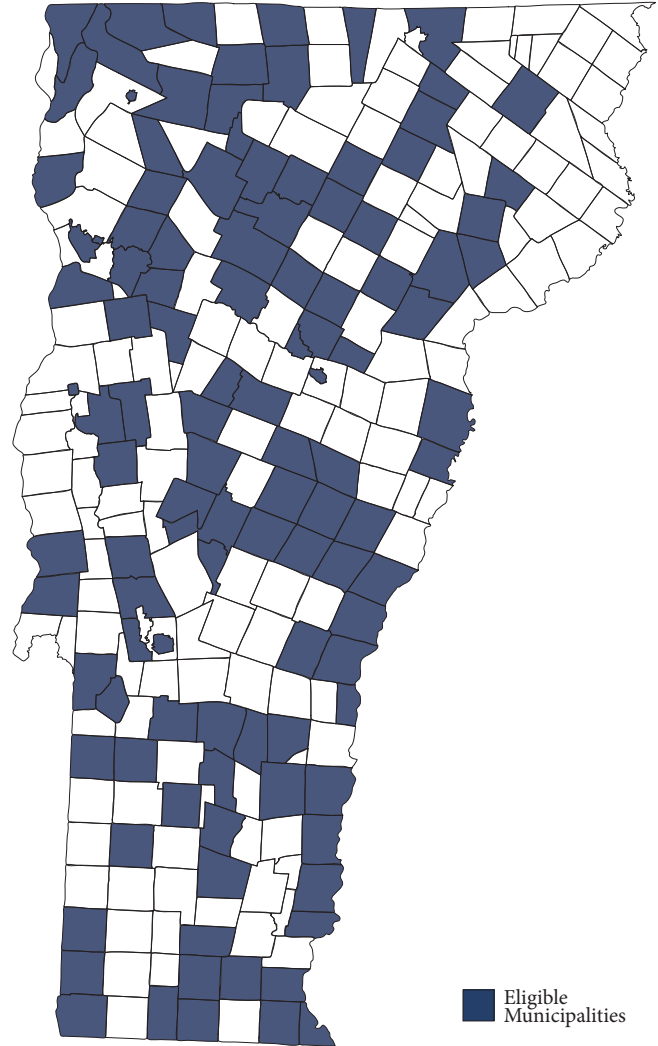
- Priority site consideration by the State Building and General Services (BGS) when leasing or constructing buildings..



## Overview

The State's historic tax credit program is one of the primary benefits of Downtown and Village Center designation, and supports revitalization seen in community centers across the state. To date there are 24 designated Downtowns and 119 Village Centers. Annually, these designated areas submit well over 30 rehabilitation and renovation project applications to help support investments that exceed \$20 million. The legislature's support of a \$500,000 increase to the program during last year's legislative session allowed the Downtown Board to support a record number of projects to spur building rehabilitation and economic development in 26 communities.

Another change from last session added new incentives to encourage technology-related infrastructure investments to help draw high-tech businesses and jobs to our downtowns. Projects awarded include expansion of the Maple Corner Store in Calais; rehabilitation of an underused warehouse in Bellows Falls, and code and façade improvements in support of new businesses in Waterbury and Randolph that are capitalizing on Vermont's micro-brew industry. A sales tax reallocation for the City of Burlington supported public infrastructure in conjunction with the construction of hotel and parking facility on St. Paul Street. Part of ongoing development to link Church Street with Burlington's waterfront, the project is also projected to create 130 jobs.



## By the Numbers

### Downtown and Village Center Tax Credits [2009-2014]

131 projects completed

48 communities served

\$9.6 million awarded credits

\$188 million in private investment



For more information, please contact:

Caitlin Corkins: [caitlin.corkins@state.vt.us](mailto:caitlin.corkins@state.vt.us) or 802.828.3047

or visit: [http://accd.vermont.gov/strong\\_communities/opportunities/revitalization/downtown\\_village\\_tax\\_credit](http://accd.vermont.gov/strong_communities/opportunities/revitalization/downtown_village_tax_credit)

# Designated Downtowns and Village Centers

# Tax Credit Matrix

	20% Historic (Federal)	10% Historic (State)	25% Façade (State)	50% Technology (State)	50% Code (State)
<b>Eligible buildings</b>	Income-producing property listed OR eligible for listing in the National Register.	Approved federal application and located within a Downtown or Village Center District.	Built before 1983 and located within a Downtown or Village Center District.		
<b>Eligible applicants</b>	Individuals and businesses.	Individuals, businesses and non-profit organizations.			
<b>Eligible work</b>	Hard and some soft costs. Exceptions include site work and additions, including elevator towers.	All costs eligible for the 20%. Cost exceeding \$100K for elevator and sprinklers are eligible.	Improvements to the front of the building only as approved by Downtown staff.	Installation and improvements to data or network wiring and heating, ventilating and cooling (HVAC) systems related to technology upgrades (e.g. AC for server rooms).	Elevator, Sprinkler, and Lift and code work as required by the Department of Public Safety (DPS).
<b>Design Standards</b>	Secretary of the Interior's Standards for Rehabilitation.				
<b>Minimum investment</b>	More than \$5,000 OR the adjusted basis of the property, whichever is greater.		More than \$5,000 AND less than the building's adjusted basis.	More than \$5,000.	
<b>Credit Cap</b> Total credits capped at \$2.2 M per state fiscal year. Community cap of no more than 30% of total credit amount available.	None. May be combined with the state 10% Historic, 50% Technology and 50% Code credits.	10% of the first \$500,000 in project costs and half the costs exceeding \$500,000. May be combined with the 50% Technology and 50% Code credit.	\$25,000. May be combined with the 50% Technology and 50% Code credit.	\$30,000. May be combined with 25% Façade and %50 Code credit.	\$50,000 for a sprinkler system; \$50,000 for an elevator; \$40,000 for a LULA; \$12,000 for a lift; \$50,000 for other code work. May be combined with the Federal 20%. If eligible, the credit may be combined with the 10% historic credit OR 25% Façade and 50% Technology credit but never both.
<b>Time limit</b>	24 months; 60 months for phased project.	Project must be completed within 60 months from date of allocation or the credits are forfeited.			
<b>Carry forward</b>	20 years	9 years.			
<b>Application Process</b>	No deadline. Pre-construction consultation strongly encouraged. Approved Part 1 and 2. Part 1 certifies the building as historic. Part 2 describes the proposed rehabilitation.	Applications due July 1 until credits are exhausted. Eligible projects must have approved Part 2 from NPS. Application reviewed by Vermont Downtown Board.	Applications due July 1 until credits are exhausted. Pre-construction consultation recommended. Application reviewed by Vermont Downtown Board.	Applications due July 1 until credits are exhausted. Certification from qualified engineer required. Application reviewed by Vermont Downtown Board.	Applications due July 1 until credits are exhausted. Proof of DPS inspection required to apply. Application reviewed by Vermont Downtown Board.
	Part 3 certified by the NPS. File IRS Form 3468.	Credits issued to applicant or as a Bank Credit Certificate or Insurance Credit Certificate. Attach approved Tax Credit Certificate to State Forms. *To determine tax implications for sale of tax credits specific to your circumstances, consult accountant or tax attorney.			

For More Information Contact:  
Caitlin Corkins at (802) 828.3047  
caitlin.corkins@vermont.gov



## Downtown Historic Tax Credits

## Hardwick's Revival

### Overview

Several years ago Hardwick's Main Street was in a state of decline like many communities throughout Vermont. Buildings were run down, underused or even condemned. Adding to these issues, in 2006, a tragic fire gutted the Bemis Block, a prominent building in the heart of downtown. Rather than tearing it down to create a parking lot, the community chose restoration and created new business and housing within the historic building. This key decision not only sparked a new direction for Hardwick, it also showed other small towns how saving one historic building can spur redevelopment of an entire community.

### Challenge

The expense to repair and bring historic downtown buildings up to code (especially costly items like sprinklers and elevators) often exceeds the value of the building. Rents in many of Vermont's smaller downtowns and village centers are often low and may not generate significant capital to finance a major rehabilitation. With insufficient funding to fill the gap, banks are reluctant to make loans to upgrade buildings. As a result, buildings are not maintained and Main Street slowly closes down. Over time, property values decline along with the local economy.

### Solution

Downtown and Village Center tax credits help close this financial gap, make projects economically viable, spark community revitalization, cement a sense of place, and bring buildings back onto the tax rolls.

*"The amount of new activity, life and excitement on Main Street is unprecedented. It's clear to me that strong communities need vital urban cores -- and with the help of the tax credits, we've made a great start in Hardwick."*

Michael Gohl  
Hardwick Architect

For More Information Contact:

Caitlin Corkins at (802) 828.3047 or [caitlin.corkins@state.vt.us](mailto:caitlin.corkins@state.vt.us)

## The Result

In Hardwick, seven buildings have been rehabilitated with the help of tax credit-financing and another five are in progress, or near completion. Approximately \$820,000 in state tax credits have leveraged over \$5 million in outside investments to date, jumpstarting new businesses and creating jobs, developing quality housing, and bringing new vitality to the commercial district. An analysis of Hardwick's downtown property values (Grand List) is evidence that public investment to improve these buildings results in increased property tax revenue. By promoting reinvestment and encouraging projects that put dollars back into the local economy, tax credits are a critical factor in promoting economic vitality for communities that take advantage.

### Bemis Block - 73 South Main Street



Grand List After  
\$797,400

Grand List Before  
\$257,800



### Hill Block [1874] - 35 South Main Street



Grand List After  
\$314,500

Grand List Before  
\$55,400



### Hardwick Inn - 1 North Main Street

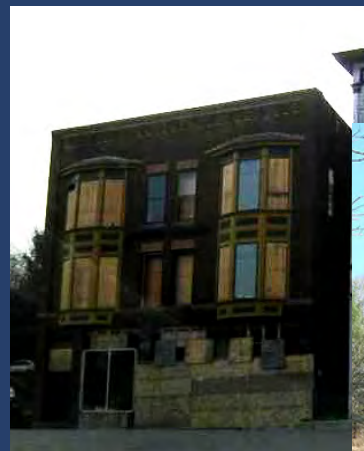


Grand List After  
\$583,300

Grand List Before  
\$147,800



### Marshall Block - 87 South Main Street



Grand List After  
\$297,200

Grand List Before  
\$145,500



For More Information Contact:

Caitlin Corkins at (802) 828.3047 or [caitlin.corkins@state.vt.us](mailto:caitlin.corkins@state.vt.us)

## Overview

The damage in Wilmington resulting from 2011's Tropical Storm Irene was among the worst in the state with over 48 businesses flooded. Tucked in the mountains in southern Vermont, this classic skiing and recreation town is now a poster child for what can happen when people collaborate and unite around a shared goal to rebuild a devastated downtown economy. Thanks to the hard work of municipal leaders, local residents, a strong and dedicated group of second-homeowners, local foundations, businesses, private investors, and state policymakers, Wilmington's revival is now well on its way.

## The Challenge

In 2011, the community was struggling economically with declining population and slowing tax revenue. Irene's flood destruction drove retail sales to new lows. Worse still, in the historic downtown, 80% of the buildings were damaged by flood waters, two were completely swept away by the raging waters, and every business was forced to close. Although some businesses began to re-open in the coming months, others closed for good. With so many vacant or severely damaged buildings the cost to rebuild was difficult to comprehend. In addition to structural problems and water damage, state building codes required owners to bring their historic buildings up to current codes. Even for building owners fortunate to have flood insurance, the cost of the flood repairs and code improvements often exceeded the value of the property.

## The Solution

In response, an energetic organization, Wilmington Works was founded to champion and lead downtown's revival. Working alongside municipal staff, a major goal of the group was to foster economic development via a new partnership between the public and private sector. The Downtown and Village Center tax credit program, along with the special flood provisions enacted by the legislature, played a critical role bridging the financial gap and attracting investors needed to restore the downtown to its former glory.

## The Result

Since Irene, ten projects in Wilmington have received state tax credits. The resulting reconstruction projects gave the community hope at a critical time and created the momentum needed to spark a larger revival. Today, iconic landmarks in Wilmington are back in business, including Dot's Restaurant and the Vermont House, and additional tax credit projects are in progress or nearing completion. Over \$550,000 in state tax credits is anticipated to leverage almost \$6 million in private investment. "Without this program, there are several projects in Wilmington that could not have happened or would have been a lot harder," says Adam Grinold, former Director of Wilmington Works. "We would still be looking at vacant storefronts instead of new businesses and ongoing construction." Now the local economy is on the upswing with receipts returning to their pre-Irene levels, jumping 22% between 2012 and 2013. "This community really came together after Irene," says Grinold "but without the help of the tax credits, we wouldn't have been able to come back this quickly or strongly."



For more information, please contact:

Caitlin Corkins: [caitlin.corkins@state.vt.us](mailto:caitlin.corkins@state.vt.us) or 802.828.3047

or visit: [http://accd.vermont.gov/strong\\_communities/opportunities/revitalization/downtown\\_village\\_tax\\_credit](http://accd.vermont.gov/strong_communities/opportunities/revitalization/downtown_village_tax_credit)

## Overview

The Municipal Planning Grant Program encourages and supports planning and revitalization for local municipalities in Vermont. Awarded annually and administered by the Department of Housing and Community Development, the Municipal Planning Grant Program works to strengthen Vermont by funding local planning initiatives that support statewide planning goals. Since 1998, the Municipal Planning Grant Program has provided over \$10.6 million to 230 cities and towns across Vermont to help breathe new life into communities, plan for future growth and development and improve quality of life.

## Annual Snapshot

This year, grants ranging from \$3,800 to \$35,000 will help towns like Bethel update their zoning regulations, support the creative economy in Middletown Springs, help Wolcott respond to the loss of a prominent business and identify important natural resources in Plainfield. Around the state, grant funding will help many small towns develop strategies to reduce damage from flooding and make the places where people gather – their downtowns and villages – stronger and more resilient.

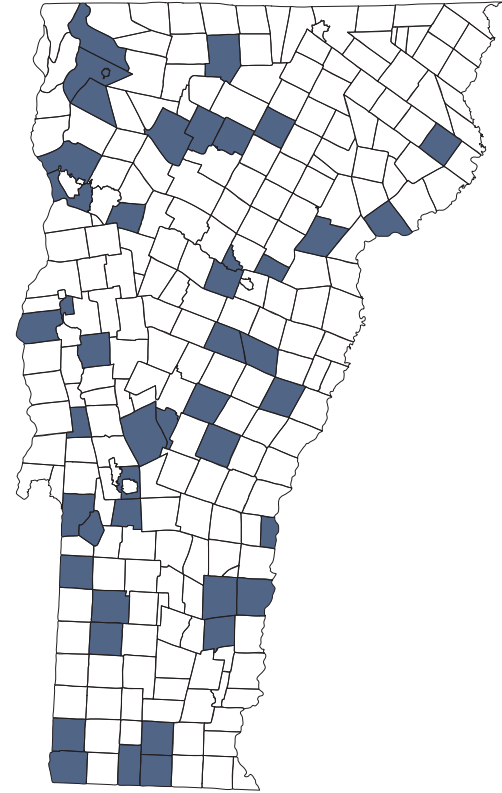
## 2015 Grant Recipients

Addison, Barnard, Bennington, Berlin, Bethel, Brookfield, Cambridge, Chelsea, Chester, Chittenden, Clarendon, Colchester, Craftsbury, Dorset, Georgia, Grafton, Granby, Hyde Park, Johnson, Manchester, Middlebury, Middletown Springs, Montgomery, Montpelier, Pawlet, Peacham, Pittsfield, Plainfield, Poultney, Pownal, Readsboro, Richmond, Rutland Town, South Burlington, Springfield, St. Albans City, St. Albans Town, Strafford, Sudbury, Swanton, Waltham, Waterford, Whitingham, Wilmington, Windsor, and Wolcott.

## Program Description

Competitively awarded by the Department of Housing and Community Development (DHCD), this year's Municipal Planning Grants were selected from 58 communities across the state requesting over \$623,000. The 44 projects slated for funding proposed innovative solutions to address growth and development in their community. Grant details are below.

- Funds Available: approximately \$460,000 annually
- 230 municipalities served and 1,108 grants issued since 1998
- Eligibility: municipalities with a confirmed planning process
- Grants – up to \$20,000 for a single municipality and \$35,000 for a consortium of two or more towns
- Matching Funds - a small cash match is required for grant requests over \$8,000
- Source – Municipal Regional Planning Fund (property transfer tax)
- Vermont State Statute – 24 V.S.A. §4306



For more information, please contact:

Annina Seiler: [annina.seiler@state.vt.us](mailto:annina.seiler@state.vt.us) or 802.828.1948

or visit: [http://accd.vermont.gov/strong\\_communities/funding/municipal\\_planning\\_grants](http://accd.vermont.gov/strong_communities/funding/municipal_planning_grants)



### **Downtown and Village Center Tax Credit\***

State investment tax credit for qualified historic rehabilitation, façade, code and technology upgrades for properties constructed before 1983 located within a Designated Downtown or Village Center.

**Range:** 10 – 50% of eligible expenditures

**Eligibility:** Properties within Designated Downtown or Village Center

**Deadline:** Annually in July

**Contact:** Caitlin Corkins, (802) 828-3047 [caitlin.corkins@vermont.gov](mailto:caitlin.corkins@vermont.gov)

**Website:** [http://accd.vermont.gov/strong\\_communities/opportunities/funding/downtown\\_village\\_tax\\_credit](http://accd.vermont.gov/strong_communities/opportunities/funding/downtown_village_tax_credit)

### **Federal Rehabilitation Investment Tax Credit\***

Federal investment tax credit for 20% of the rehabilitation costs (including labor, materials and architects or other consultant fees) for income-producing buildings listed in the National Register of Historic Places.

**Range:** 20% of eligible expenditures

**Eligibility:** Owners of income-producing historic buildings

**Deadline:** Rolling application deadline; file application before construction

**Contact:** Caitlin Corkins, (802) 828-3047 [caitlin.corkins@vermont.gov](mailto:caitlin.corkins@vermont.gov)

**Website:** <http://www.nps.gov/tps/tax-incentives.htm>

### **Sales Tax Reallocation Program\***

Municipalities and the developer of the qualified project may jointly apply for a reallocation of sales taxes on construction materials. Qualified projects must be located within a Designated Downtown and reallocated taxes must be used by the municipality to support the qualified project. Projects are awarded on a competitive basis.

**Range:** Based on sales tax generated in excess of \$100,000 to \$1M depending on the size of municipality

**Eligibility:** Joint application between municipality and developer located within Designated Downtown

**Deadline:** Annually in July

**Contact:** Caitlin Corkins, (802) 828-3047 [caitlin.corkins@vermont.gov](mailto:caitlin.corkins@vermont.gov)

**Website:** [http://accd.vermont.gov/strong\\_communities/opportunities/funding/salestaxreallocation](http://accd.vermont.gov/strong_communities/opportunities/funding/salestaxreallocation)

### **Vermont Community Development Program (CDBG)\***

**Accessibility Modification Grants** – Federal grants to bring existing municipal buildings and non-school libraries into compliance with the Americans with Disabilities Act (ADA).

**Implementation Grants** – Federal grants for economic development, housing, public facilities, and public services that will benefit low/moderate income individuals, eliminate slums or blight, or address an urgent need.

**Planning Grants** – Federal grants for community development planning, downtown planning studies, and project development to benefit people with low to moderate incomes and/or eliminate “slums and blight.”

**Range:** \$30,000 - \$1,000,000

**Eligibility:** Municipalities and/or municipalities on behalf of organizations and private owners

**Deadline:** Open application with funding decisions made throughout the year

**Contact:** Josh Hanford, (802) 595-1385 [josh.hanford@vermont.gov](mailto:josh.hanford@vermont.gov)

**Website:** [http://accd.vermont.gov/strong\\_communities/opportunities/funding/vcdp](http://accd.vermont.gov/strong_communities/opportunities/funding/vcdp)

### **Downtown Transportation Fund\***

State grants for municipalities to finance transportation-related capital improvements in support of economic development, within or serving a Designated Downtown, including construction or alteration of roads and highways, parking facilities, pedestrian and streetscape improvement, rail or bus facilities or equipment, and underground relocation of electric utility, cable and telecommunications lines.

**Range:** 50% of overall project costs up to maximum of \$100,000

**Eligibility:** Municipalities with a Designated Downtown

**Deadline:** Annually in March

**Contact:** Gary Holloway, (802)828-3220 [gary.holloway@vermont.gov](mailto:gary.holloway@vermont.gov)

**Website:** [http://accd.vermont.gov/strong\\_communities/opportunities/funding/downtown\\_transportation\\_fund](http://accd.vermont.gov/strong_communities/opportunities/funding/downtown_transportation_fund)

\* Grant program receives priority consideration due to designation

### Municipal Planning Grant Program\*

State grants for a wide range of municipal planning projects including municipal land use plans, zoning and subdivision bylaws, designated downtown, village and neighborhood planning.

**Range:** \$2,500 - \$20,000

**Eligibility:** Municipalities with adopted plans confirmed by their regional planning commission

**Deadline:** Annually in September

**Contact:** Annina Seiler, (802) 828-1948 [annina.seiler@vermont.gov](mailto:annina.seiler@vermont.gov)

**Website:** [http://accd.vermont.gov/strong\\_communities/opportunities/funding/overview/municipal\\_planning\\_grants](http://accd.vermont.gov/strong_communities/opportunities/funding/overview/municipal_planning_grants)

### Hazard Mitigation Grant Program

Provides grants to implement long-term hazard mitigation actions that reduce structure damage or loss of life due to natural disasters. Examples include upsizing culverts, elevating or floodproofing buildings, property acquisitions/demolitions, and mitigation planning. Details on website.

**Range:** No minimum or maximum. Local match of 25%.

**Eligibility:** Municipalities, state agencies, regional planning agencies, non-profits in select circumstances. Eligible entities on behalf of private owners.

**Deadline:** Funding available after a major disaster declaration. Rolling application deadlines vary depending on funding.

**Contact:** Ray Doherty, 802-241-5258 [ray.doherty@vermont.gov](mailto:ray.doherty@vermont.gov)

**Website:** <http://vem.vermont.gov/mitigation/applications/>

### State Historic Preservation Grants\*

State 50:50 matching grants for the repair and restoration of historic buildings listed or eligible for listing in the National Register of Historic Places in Vermont.

**Range:** \$1,000 - \$20,000

**Eligibility:** Municipalities and non-profit organizations

**Deadline:** Annually in October

**Contact:** Caitlin Corkins, (802) 828-3047 [caitlin.corkins@vermont.gov](mailto:caitlin.corkins@vermont.gov)

**Website:** [http://accd.vermont.gov/strong\\_communities/preservation/grants/historic\\_preservation](http://accd.vermont.gov/strong_communities/preservation/grants/historic_preservation)

### Certified Local Government Program

Federal grants available for resource identification and planning, National Register nominations, downtown planning, public education, archeological studies, and building feasibility studies.

**Range:** \$500 - \$25,000

**Eligibility:** Municipalities that are enrolled as Certified Local Governments

**Deadline:** Annually in January

**Contact:** Devin Colman, (802) 828-3043 [devin.colman@vermont.gov](mailto:devin.colman@vermont.gov)

**Website:** [http://accd.vermont.gov/strong\\_communities/preservation/planning/clgp](http://accd.vermont.gov/strong_communities/preservation/planning/clgp)

### Brownfield Revitalization Fund\*

Grants and loans for remediation of brownfield sites. The funds are made available to Vermont by the EPA and eligible applicants can be private developers, non-profits and municipalities.

**Range:** Grants are capped at \$200,000

**Eligibility:** Municipalities, non-profit organizations and private developers

**Deadline:** Rolling

**Contact:** Kiersten Bourgeois, (802) 793-4899 [kiersten.bourgeois@vermont.gov](mailto:kiersten.bourgeois@vermont.gov)

**Website:** [http://accd.vermont.gov/business/relocate\\_expand/capital/brownfields](http://accd.vermont.gov/business/relocate_expand/capital/brownfields)

### Cultural Facilities Grant Program

Matching state grants to improve community facilities used to provide cultural activities to the public to enhance or expand the capacity of an existing building to provide cultural programming.

**Range:** \$1,000 - \$30,000

**Eligibility:** Municipalities and non-profit organizations

**Deadline:** Annually in the spring

**Contact:** Michelle Bailey, (802) 828-3294 [mbailey@vermontartscouncil.org](mailto:mbailey@vermontartscouncil.org)

**Website:** <http://www.vermontartscouncil.org/grants-and-services/organizations/cultural-facilities>

\* Grant program receives priority consideration due to designation

Village Centers

Downtowns

Richard Amore

(802) 828.5229

[richard.amore@vermont.gov](mailto:richard.amore@vermont.gov)

[http://accd.vermont.gov/strong\\_communities/opportunities/revitalization](http://accd.vermont.gov/strong_communities/opportunities/revitalization)

Gary Holloway

(802) 828.3220

[gary.holloway@vermont.gov](mailto:gary.holloway@vermont.gov)

### Human Services and Educational Facilities Grant Program

Matching state grants for capital costs associated with the major maintenance, renovation, and development of facilities used for human services and health care, or educational opportunities.

**Range:** \$1,000 - \$25,000

**Eligibility:** Municipalities and non-profit organizations

**Deadline:** Annually in October

**Contact:** Chrissy Gilhuly, (802) 828-3519 christine.gilhuly@vermont.gov

**Website:** <http://bgs.vermont.gov/formsandpublications>

### Regional Economic Development Grant Program

Matching state grants to stimulate the creation and development or retention of economic development of individual or regional Vermont communities.

**Range:** \$1,000 - \$25,000

**Eligibility:** Municipalities and non-profit organizations

**Deadline:** Annually in October

**Contact:** Chrissy Gilhuly, (802) 828-3519 christine.gilhuly@vermont.gov

**Website:** <http://bgs.vermont.gov/formsandpublications>

### Windham County Economic Development Program

Private funding of \$2 Million annually through 2019 to promote economic development in Windham County, in the form of grants or loan financing in partnership between ACCD and the VEDA.

**Range:** Grants - \$25,000-\$2 Million; Loans - \$25,000-\$350,000

**Eligibility:** Municipalities, non-profit organizations and governmental organizations located in Windham County are eligible. Businesses will be considered for financing

**Deadline:** July 2015

**Contact:** Kimberly Woolaver, (802) 828-3230 kimberly.woolaver@vermont.gov

**Website:** <http://accd.vermont.gov/business/WCGP>

### ANR Drinking Water State Revolving Loan Construction Fund\*

State Revolving Loan to assist in construction of public, private and nonprofit community water, wastewater and stormwater systems. Details on various programs on website.

**Range:** \$2,000,000 per funding cycle and \$6,000,000 cap for any one project. No minimum project amount.

**Eligibility:** Municipalities, private developers and non-profit organizations

**Deadline:** Annually in January.

**Contact:** Ashley Lucht, (802) 585-4904 ashley.lucht@vermont.gov

**Website:** <http://wastewater.vt.gov/fundingdwsrfconstructionloan.htm>

### ANR Drinking Water State Revolving Loan Planning Fund

State Revolving Loan to assist in the planning and design of public, private and nonprofit community water, wastewater and stormwater systems. Details on various programs on website.

**Range:** \$100,000 maximum. No minimum project amount.

**Eligibility:** Municipalities, private developers and non-profit organizations

**Deadline:** Accepted on a continuing basis.

**Contact:** Ashley Lucht, (802) 585-4904 ashley.lucht@vermont.gov

**Website:** <http://www.anr.state.vt.us/dec/dwgpw/fundingdwsrfplanningloan.htm>

### ANR Recreational Trails Grant Program

State 80:20 matching grants for the maintenance, restoration, design and construction of recreational trails.

**Range:** Maximum of \$20,000. Local match of 20%.

**Eligibility:** Municipalities, located outside of Chittenden County with a confirmed planning process.

**Deadline:** Annually in February

**Contact:** Sherry Winnie, (802) 760-8450 sherry.winnie@vermont.gov

**Website:** <http://fpr.vermont.gov/recreation/grants/rtp>

\* Grant program receives priority consideration due to designation

### Recreational Facilities Grants Program

Matching state grants for capital costs associated with the development and creation of community recreational opportunities.

**Range:** \$1,000 - \$25,000

**Eligibility:** Municipalities and non-profit organizations

**Deadline:** Annually in October

**Contact:** Chrissy Gilhuly, (802) 828-3519 christine.gilhuly@vermont.gov

### ANR Ecosystem Restoration Grant Program

State grants for the design and construction projects that target nonpoint sources of pollution that cause or contribute to the state's surface waters. Details on website.

**Range:** Maximum of \$250,000. Local match varies.

**Eligibility:** Municipalities, regional organizations, non-profits associations, citizen groups, and state agencies.

**Deadline:** Two rounds annually, varies depending on funding.

**Contact:** David Pasco, (802) 490-6112 david.pasco@vermont.gov

**Website:** <http://www.watershedmanagement.vt.gov/grants.htm>

### ANR Caring for Canopy Grant Program

State 50:50 grants to help communities care for tree canopy by taking the necessary actions to developing and sustaining a community-wide tree program, including tree plantings, inventories, maintenance, and planning. Details on website.

**Range:** \$500 - \$5,000. Local match of 50%.

**Eligibility:** Municipalities and non-profits associations.

**Deadline:** Annually in April

**Contact:** Danielle Fitzko, (802) 598-9992 danielle.fitzco@vermont.gov

**Website:** [http://fpr.vermont.gov/forest/community\\_forests/community\\_canopy\\_grants](http://fpr.vermont.gov/forest/community_forests/community_canopy_grants)

### VTrans Transportation Alternative Program\*

State 80:20 matching grants for the construction, planning, and design of bike and pedestrian facilities (on or off road), sidewalks, bicycle infrastructure, lighting, and others. Details on website.

**Range:** \$50,000 - \$300,000. Local match of 20%.

**Eligibility:** Municipalities, transit agencies, school district, and regional planning commissions

**Deadline:** Annually in October

**Contact:** Scott Robertson, (802) 828-5779 scott.robertson@vermont.gov

**Website:** <http://vtransengineering.vermont.gov/bureaus/mab/local-projects/transportation-alternatives>

### VTrans Bicycle and Pedestrian Program\*

State 90:10 matching grants for the scoping, design, and construction of bike and pedestrian facilities, sidewalks, bicycle lanes, crosswalks, shared-use paths, and lighting. Details on website.

**Range:** No minimum or maximum range. Local match of 10%.

**Eligibility:** Municipalities, transit agencies, school district, and regional planning commissions

**Deadline:** Annually in July

**Contact:** Jon Kaplan, (802) 828-0059 jon.kaplan@vermont.gov

**Website:** <http://vtransengineering.vermont.gov/bureaus/mab/local-projects/bike-ped>

### VTrans/ACCD Strong Communities, Better Connections Program\*

State 90:10 matching grants for planning that align land use planning and community revitalization with transportation investments. Details on website.

**Range:** No minimum or maximum range. Local match of 10%.

**Eligibility:** Municipalities, located outside of Chittenden County with a confirmed planning process.

**Deadline:** Pilot year, future funding to be determined.

**Contact:** Jackie Cassino, (802) 828-2758 jackie.cassino@vermont.gov

or Richard Amore, richard.amore@vermont.gov

**Website:** <http://vtransplanning.vermont.gov/programs/scbc>

\* Grant program receives priority consideration due to designation

Village Centers

Downtowns

Richard Amore  
(802) 828.5229

[richard.amore@vermont.gov](mailto:richard.amore@vermont.gov)

[http://accd.vermont.gov/strong\\_communities/opportunities/revitalization](http://accd.vermont.gov/strong_communities/opportunities/revitalization)

Gary Holloway  
(802) 828.3220

[gary.holloway@vermont.gov](mailto:gary.holloway@vermont.gov)